

Usulü: Müsemme

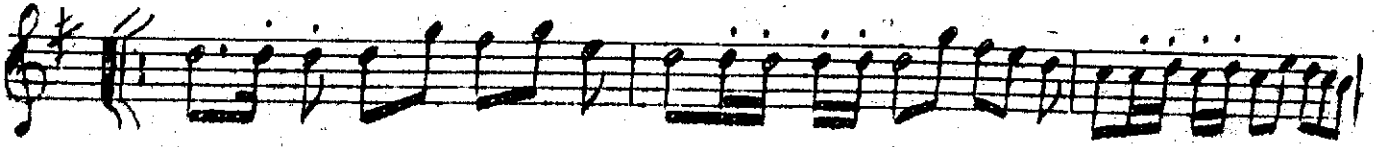
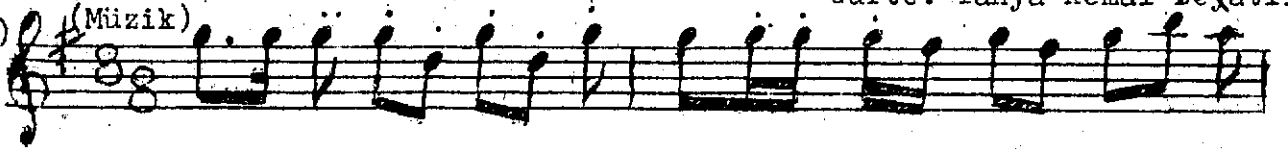
(Mahûrdan Gâzeli)

Beste: Münir Nureddin Selçuk

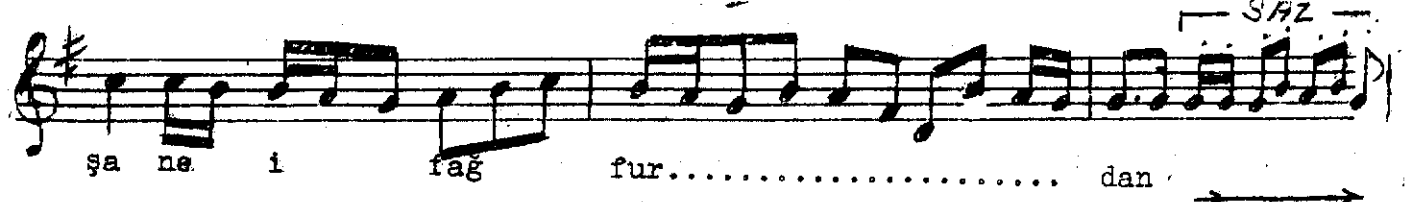
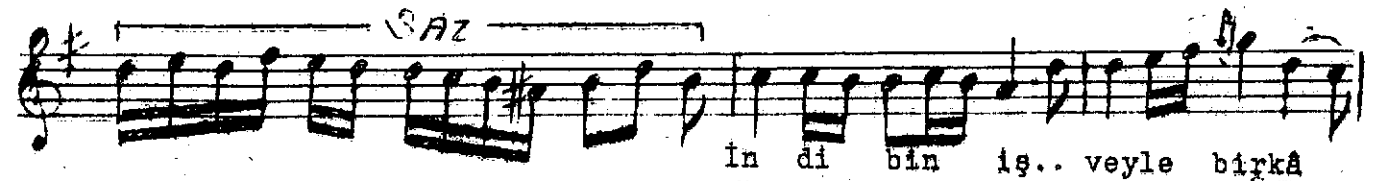
Güfte: Yahya Kemâl Beyatlı

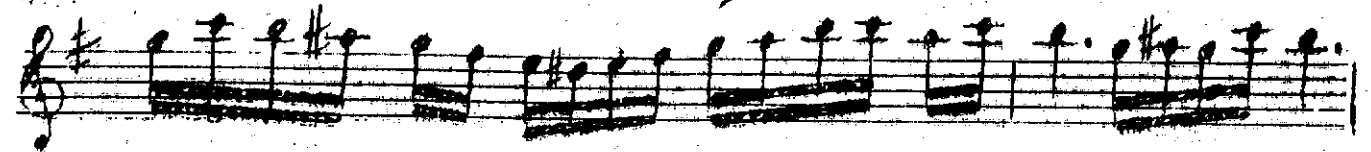
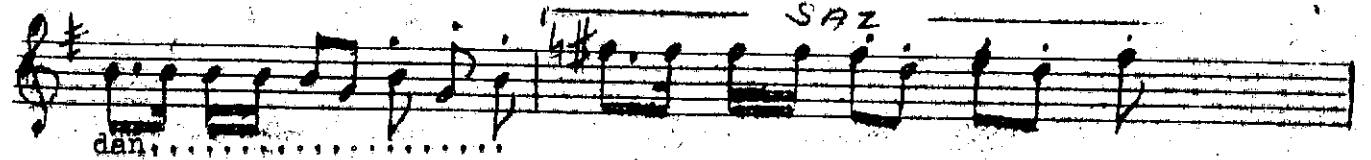
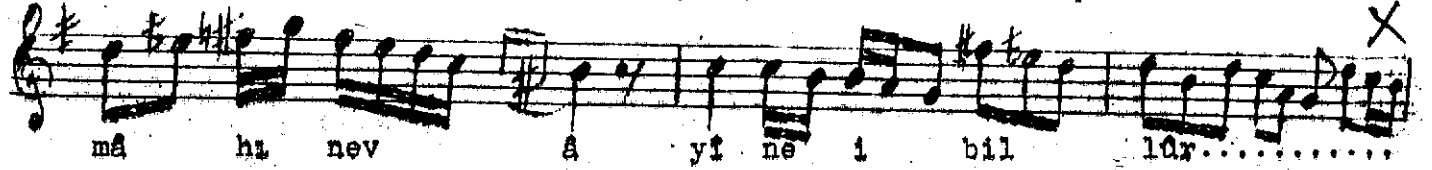
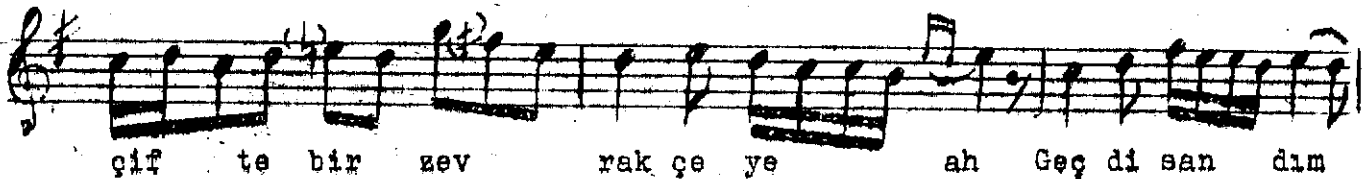
(Canlı)

(Müzik)



(Şarkı)





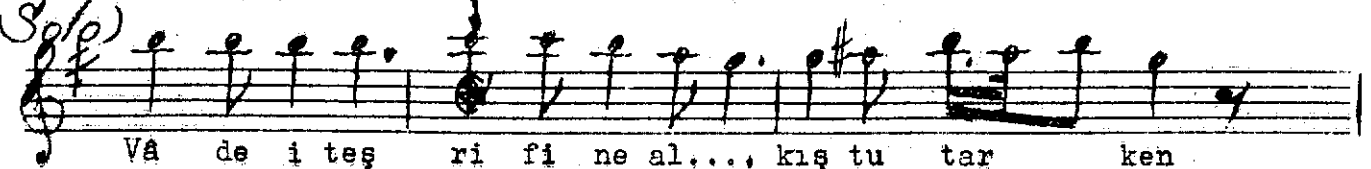
(Solo)



(Ah) (Koro)



(Solo)



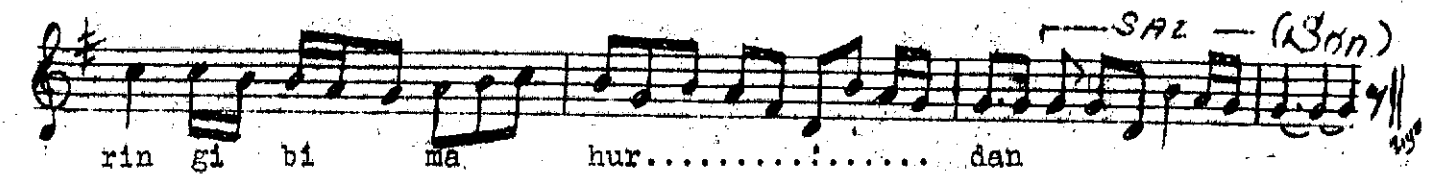
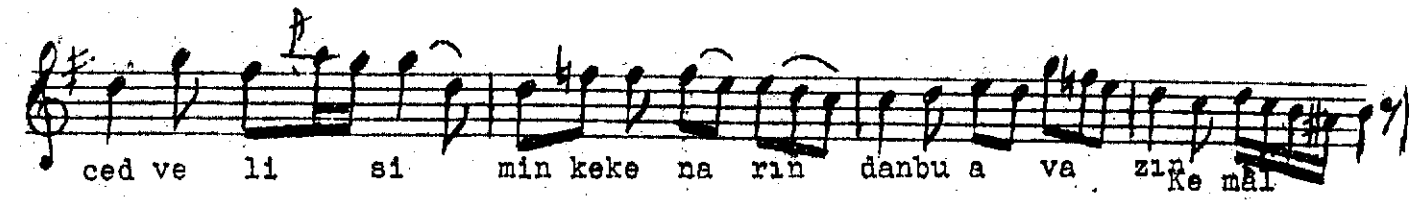
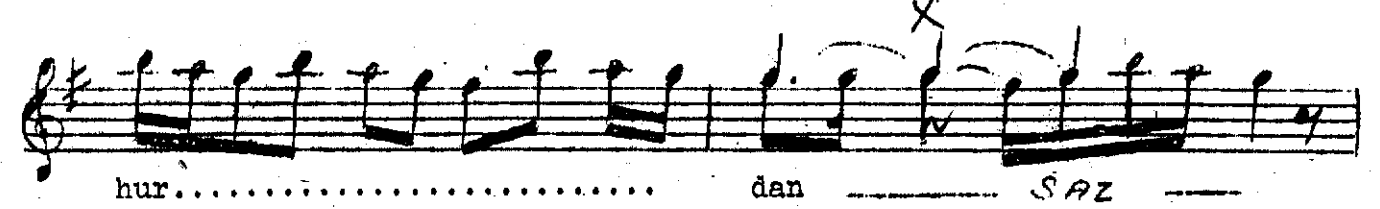
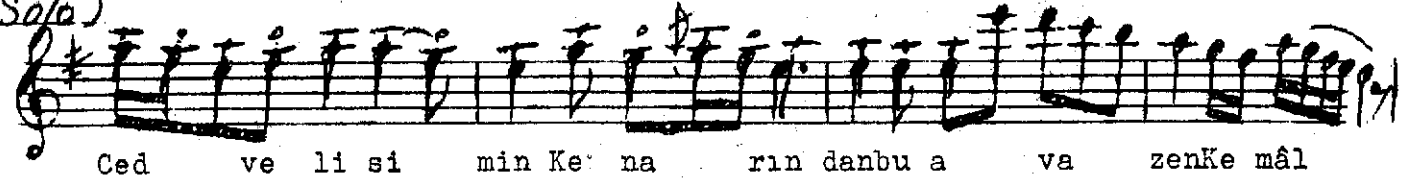
(ah)



(Koro-Erkek)



(Solo)



Gördüm ol meh dâşuna bir şal atıp lahûrdan  
Gül yanaklar üstüne yaşmak tutunmuş nûrdan  
Nerdübanlar bûşîş-i nermîn-i dâmânîyle mest  
İndi bin işveyle bir kaşâne-i fağfûrdan  
Atladı dâneni tutup mahçifte bir zevrakçeye

Geçdi sandım mâhî-nev ayine-i billûrdan  
Halkı sadâbâd iki sahil boyunca fevc fevc  
Vâde-i teşrifine alkış tutarken dûrdan  
Cedveli simin kenarından bu âvâzen Kemâl  
Kopdu bir fevvere-i zerrin gibi mahûrdan ...

İsmail Kosal